

DILATATION EXPANSION JOINT / 5400



PN 16
DN32 → DN250

PRODUCTION STANDARDS

DESIGN	TS 10880 / DIN30681
END CONNECTION	FLANGED TS EN 1092-1 / ISO 7005-1 WELDING END TS EN 12627
FACE TO FACE	TS 10880 / DIN30681
TEST	TS 10880 / DIN30681
MARKING	TS EN 19 / TS 10880/ DIN30681

FEATURES

- FAF5400 Dilatation expansion joints also named as universal expansion joints are made of two bellows separated by an intermediary pipe relieves the stress that may occur on the pipeline by absorbing wide lateral movements
- Generally used in transition points of the buildings which has different base levels, in ground movements and to avoid pipeline damages after building collapses
- Can be manufactured in flanged type (FAF5410) and welding neck type (FAF5420)

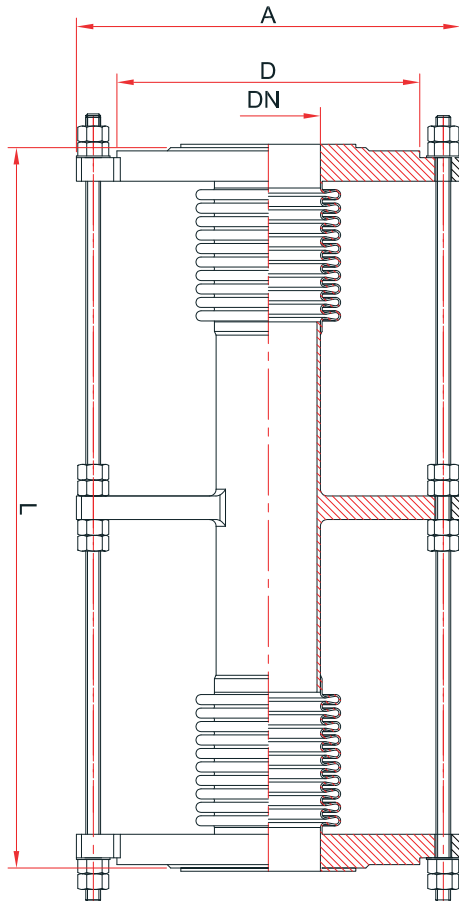
APPLICATIONS

Dilatation, Storage Tanks, Pipelines, Fire Fighting Installations

TEMPERATURE

-20, +430 °C

TECHNICAL DRAWING



MATERIAL SELECTION

BELLOW 1.4301 - AISI 304 STAINLESS STEEL
 1.4401 - AISI 316 STAINLESS STEEL
 1.4541 - AISI 321 STAINLESS STEEL

BODY 1.0037 - ST 37 STEEL
 1.4301 - AISI 304 STAINLESS STEEL
 1.4401 - AISI 316 STAINLESS STEEL

FLANGE 1.0037 - ST 37 STEEL
 1.4301 - AISI 304 STAINLESS STEEL
 1.4401 - AISI 316 STAINLESS STEEL

ROT 1.0037 - ST 37 STEEL
 1.4301 - AISI 304 STAINLESS STEEL
 1.4401 - AISI 316 STAINLESS STEEL

COATING ELECTROSTATIC POWDER EPOXY

DN	WELDING END DILATATION EXPANSION JOINT							FLANGED DILATATION EXPANSION JOINT							Effective Area cm ²		
	DIMENSION								DIMENSION								
	A	d	Expansion Range and Length (L +/-5)					D	A	Expansion Range and Length (L +/-5)							
X			Y: +/- 25	Y: +/- 50	Y: +/- 75	Y: +/- 100	X			Y: +/- 25	Y: +/- 50	Y: +/- 75	Y: +/- 100				
32	130	42,4	30	520	620	720	820	140	200	30	250	350	450	550	21		
40	135	48,3	30	530	630	730	830	150	210	30	260	360	460	560	24		
50	160	60,3	30	580	680	780	880	165	235	30	320	420	520	620	36		
65	185	76,1	60	590	690	790	890	185	255	60	330	430	530	630	57		
80	220	88,9	60	630	730	830	930	200	290	60	370	470	570	670	77		
100	255	114,3	60	630	730	830	930	220	310	60	370	470	570	670	126		
125	280	139,7	60	680	850	950	1050	250	340	60	430	600	700	800	180		
150	335	165,1	60	680	850	950	1050	285	395	60	430	600	700	800	263		
200	410	219,1	60	750	920	1020	1120	340	470	60	500	670	770	870	434		
250	490	273	60	820	1000	1100	1200	405	555	60	570	750	850	950	670		

* Valves can be produced with bigger sizes when requested.