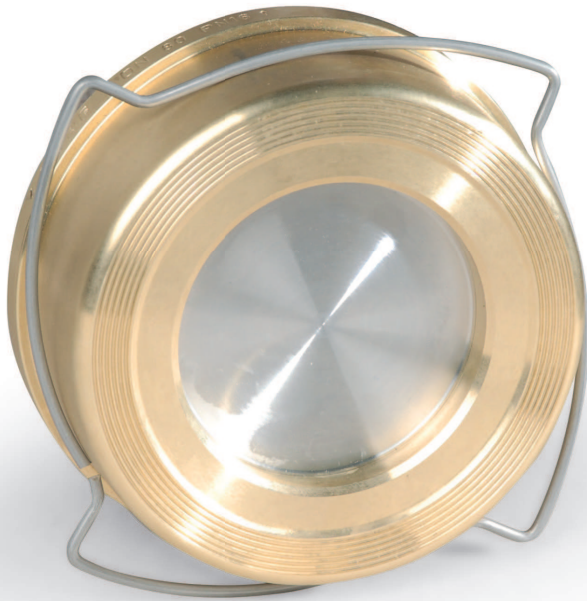


DISC-O CHECK VALVE / 2370



PN 16
DN15 → DN200

PRODUCTION STANDARDS

END CONNECTION	WAFER TYPE	TS EN 1092-1 / ISO 7005-1
FACE TO FACE		TS EN 558 Seri 49
TEST		TS EN 12266-1
MARKING		TS EN 19

FEATURES

- FAF2370 Disc-O check valve let to fluids in the facility required downstream and ceases the flow in case of reverse flow.
- Stainless steel disc, which is positioned in brass body seats on sealing surface that processed on the body via expander force and provides %100 tight sealing.
- The expander shortens and the disc shrinks back and let to flow between the body and the disc when the determined flow in the system starts.
- It can be used at horizontal and vertical positions.
- With its short installation length and hooks on the body it can be installed easily.

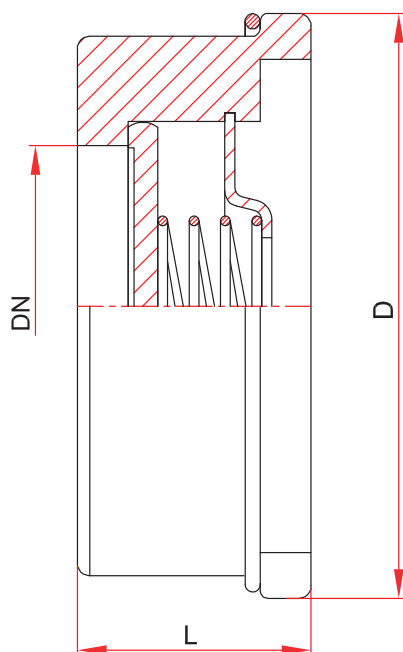
APPLICATIONS

Steam, Hot Water, Cold Water, Fluids without acidity or alkalinity properties, Pressurized Air

TEMPERATURE

+200 °C

TECHNICAL DRAWING



MATERIAL SELECTION

BODY	MS 58 - BRASS DN125 AND OVER EN GJS500 (GGG50)
DISC	1.4301 - AISI 304 STAINLESS STEEL
SPRING	STAINLESS STEEL

DN mm	DIMENSION		RATINGS		STUD SIZE	BOLT/NUT QTY	FASTENING MOMENT Nm	WRENCH SIZE (mm)
	D	L	KV m³/h	Weight Kg				
15	40	16	4	0,1	M12X70	4	85	19
20	47	19	7,5	0,15	M12X80	4	85	19
25	56	22	11	0,2	M12X80	4	85	19
32	76	28	19	0,45	M16X90	4	205	24
40	82	31,5	28	0,6	M16X100	4	205	24
50	95	40	40	1	M16X110	4	205	24
65	115	46	70	1,4	M16X120	4	205	24
80	132	50	90	2,1	M16X130	8	205	24
100	152	60	150	3,25	M16X140	8	205	24
125	184	90	200	8	M16X170	8	205	24
150	209	106	350	10,4	M20X200	8	400	30
200	264	140	530	21	M20X240	12	400	30