

GLOBE VALVE / 2150



CLASS 150/300/600
DN50 → DN600

PRODUCTION STANDARDS

DESIGN	ASME B16.34
END CONNECTION	ASME B16.5
FACE TO FACE	ASME B16.10
PRESSURE TEST	API 598
MARKING	MSS SP-25

FEATURES

- FAF2150 Globe Valve, maintains %100 tight sealing through the graphite gasket on the stainless steel disc moving perpendicular to the flow axis and seating on the machined metal seat inside the body
- Designed and manufactured according to ANSI standard
- It has cast steel body; stem, disc and sealing seats are manufactured from stainless steel
- According to its design feature; head loss is higher compared to other valve types due to the flow travelling inside the body and flow section is narrower
- Suitable for hot water, steam and industrial applications
- No maintenance needed, can be operated with lower torque ratings

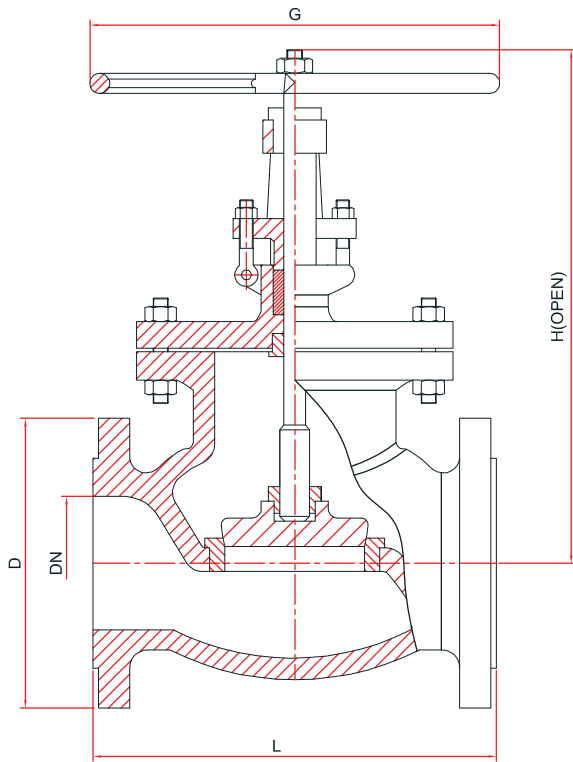
APPLICATIONS

Hot Water, Cold Water, Steam, Chemicals, Lubricants, Natural Gas, Oil&Gas, HVAC

TEMPERATURE

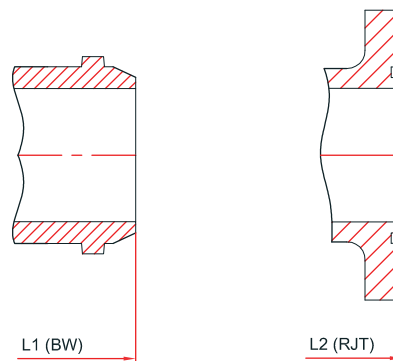
-30, +200 °C

TECHNICAL DRAWING



MATERIAL SELECTION

BODY	ASTM A-216 WCB CAST STEEL
DISC	ASTM A-216 WCB CAST STEEL
STEM	1.4021 - AISI 420 STAINLESS STEEL 1.4301 - AISI 304 STAINLESS STEEL 1.4401 - AISI 316 STAINLESS STEEL
SEALING	GRAPHITE
COATING	INDUSTRIAL EPOXY



NPS	CLASS 150							CLASS 300						
	DIMENSION					RATINGS		DIMENSION					RATINGS	
INC	D	L - RF L1 - BW	L2 - RJT	H	G	KV m³/h	Weight Kg	D	L - RF L1 - BW	L2 - RJT	H	G	KV m³/h	Weight Kg
2	150	203	216	330	200	40	23	165	267	283	350	200	40	30
2 1/2	180	216	229	390	250	70	29	190	292	308	425	250	70	45
3	190	241	254	410	250	100	40	210	318	333	485	300	100	60
4	230	292	305	475	300	180	59	255	356	371	520	300	180	83
6	280	356	368	585	350	400	115	320	445	460	655	350	400	162
8	345	495	508	725	450	750	178	380	533	549	825	500	740	265
10	405	622	635	825	500	1200	268	445	622	638	920	600	1200	375
12	485	699	711	940	600	1700	385	520	711	727	1155	700	1700	525
14	535	787	800	1200	600	2380	540	585	838	854	1250	700	2380	765
16	595	864	876	1270	650	3190	760	650	864	879	1295	800	3190	1100
18	635	978	991	1300	650	4080	1050	710	978	994	1330	900	3750	1320
20	700	978	991	1350	750	5010	1200	775	1016	1035	1390	900	4610	1550
24	815	1295	1308	1400	750	7230	1400	915	1346	1368	1480	1000	6650	1680